

**SEP300/300TC**

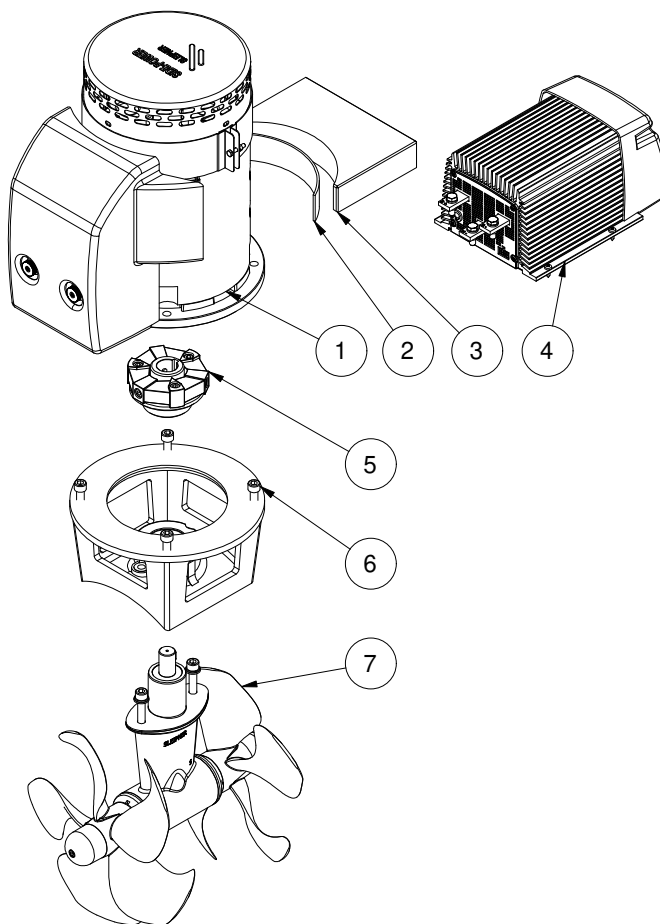
**SEP300 PRO™ tunnel bow/stern thruster**

**48V**

**Spare parts (valid from 2022-11-08)**



**SLEIPNER**



#	Quantity	Name	Item Code	Description
1	1.00	Electric motor	20 0103 48	Electric motor SEP300/SP285 48V
2	1.00	Gasket for support bracket		
3	1.00	Support bracket		
4	1.00	Proportional Power Controller complete	PPC840	PPC840 PRO™ power control unit
5	1.00	Flexible coupling Ø22xØ28	20 1450	Flexible coupling Ø22xØ28
6	1.00	Bracket for motor	20 0502	Motor bracket SE250/300
7	1.00	Gearleg	20 0602	Gearleg E250/300/340/SE300

The installer alone has responsibility for the installation of the spare parts. Side-Power only warranty the spare parts supplied only.

The information given in the document was correct at the time it was published. However, Sleipner Motor AS can not accept liability for any inaccuracies or omissions it may contain. Continuous product improvement may change the product specifications without notice. Therefore, Sleipner Motor AS can not accept liability for any possible differences between product and document.