

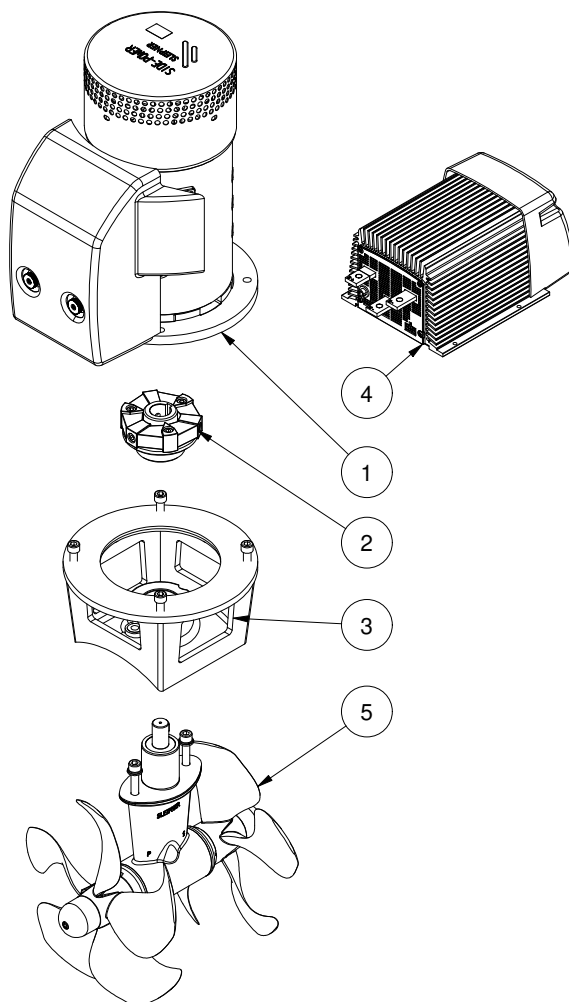
SEP250/300TC

SEP250 PRO™ tunnel bow/stern thruster
24V

Spare parts (valid from 2022-08-25)



SLEIPNER



#	Quantity	Name	Item Code	Description
1	1.00	Electric motor SEP	15 0103 24	Electric motor SEP240/250 24V
2	1.00	Flexible coupling	20 1450	Flexible coupling Ø22xØ28
3	1.00	Bracket	20 0502	Motor bracket SE250/300
4	1.00	PPC 820	PPC820	PPC820 PRO™ power control unit
5	1.00	Gearleg	20 0602	Gearleg E250/300/340/SE300

The installer alone has responsibility for the installation of the spare parts. Side-Power only warranty the spare parts supplied only.

The information given in the document was correct at the time it was published. However, Sleipner Motor AS can not accept liability for any inaccuracies or omissions it may contain. Continuous product improvement may change the product specifications without notice. Therefore, Sleipner Motor AS can not accept liability for any possible differences between product and document.