

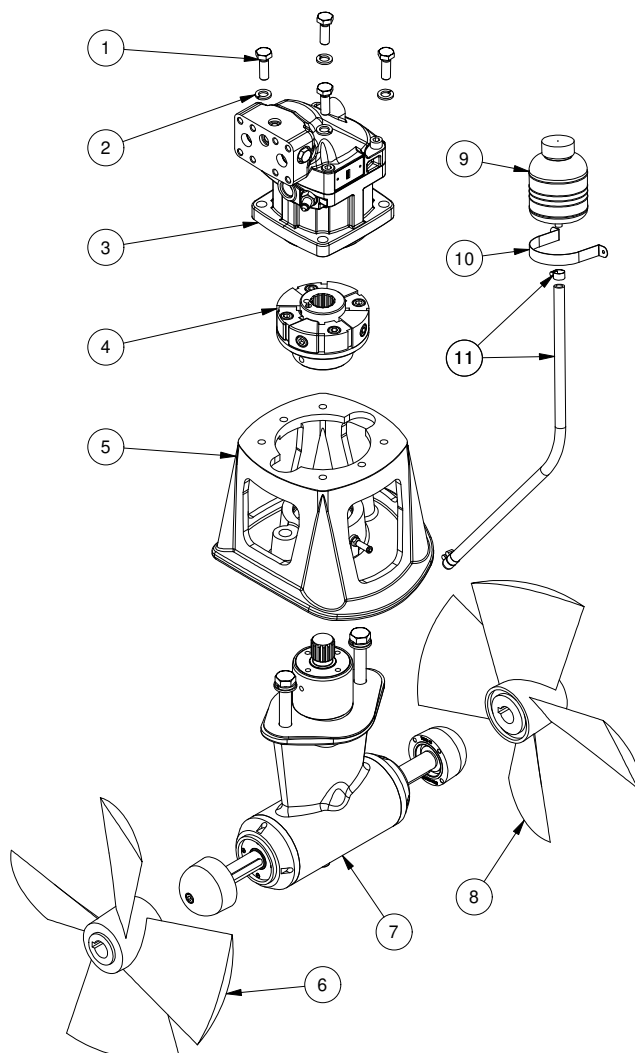
SH550/386TC-BA40

**SH550 tunnel thruster hydraulic Ø386
BA40**

Spare parts (valid from 2023-02-02)



SLEIPNER



#	Quantity	Name	Item Code	Description
1	4.00	Bolt		DIN 933 - M12 x 35
2	4.00	Spring lock washer		DIN 127 - A 12
3	1.00	Hydraulic motor	72100/BA40	Hydraulikk motor 40cc BentAxis
4	1.00	Flexible coupling - complete	50 1460 HYD	Flexible coupling SH550TC SAEC-SAEC
5	1.00	Bracket for motor	50 0502	Motor bracket SH550 PRO
6	1.00	Propeller LH	50 1270 LH	Thruster propeller 4bl for SP550 LH
7	1.00	Gearleg w/out propell	50 0600-U	Gearleg SH550 w/out propeller
8	1.00	Propeller RH	50 1270 RH	Thruster propeller 4bl for SP550 RH
9	1.00	Oil container	6 1030	Oil container
10	1.00	Bracket for oil container	6 1031	Fastener clip for oil container
11	1.00	Oilhose with clamps	20 0400	Oil hose, 2,5m with 3 clamps

The installer alone has responsibility for the installation of the spare parts. Side-Power only warranty the spare parts supplied only.

The information given in the document was correct at the time it was published. However, Sleipner Motor AS can not accept liability for any inaccuracies or omissions it may contain. Continuous product improvement may change the product specifications without notice. Therefore, Sleipner Motor AS can not accept liability for any possible differences between product and document.