

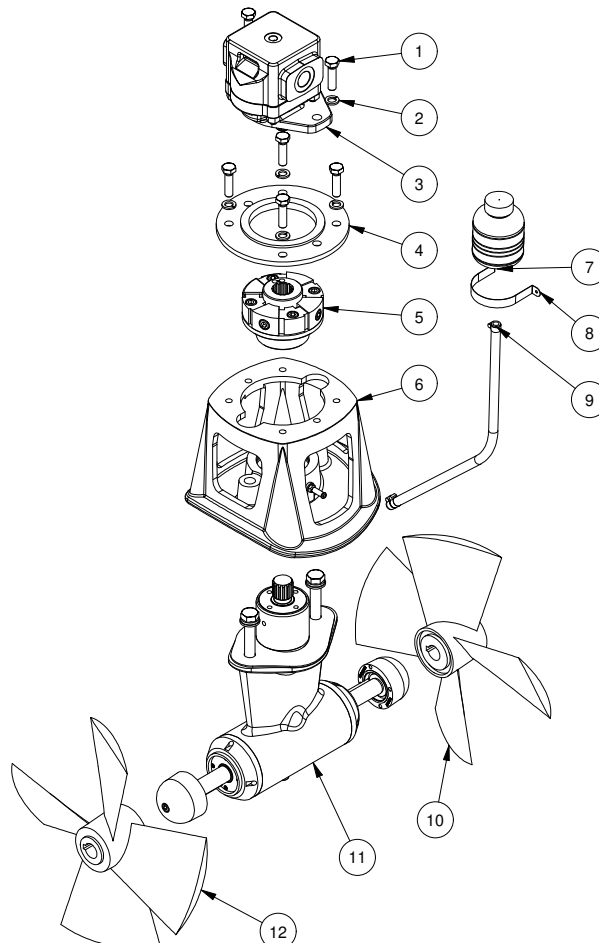
**SH420/386TC-U26**

**SH420 tunnel thruster hydraulic Ø386  
U26**

**Spare parts (valid from 2023-03-03)**



**SLEIPNER**



#	Quantity	Name	Item Code	Description
1	6.00	Bolt		DIN 933 - M12 x 45
2	6.00	Spring lock washer		DIN127B M12 A2 (SB)
3	1.00	Hydraulic motor	72100/U-26	Hydraulic motor 26cm <sup>3</sup> gear motor
4	1.00	Adapter plate	5021301	Adapter flange SP550
5	1.00	Flexible coupling	50 1460 HYD	Flexible coupling SH550TC SAEC-SAEC
6	1.00	Bracket	50 0502	Motor bracket SH550 PRO
7	1.00	Oil container	6 1030	Oil container
8	1.00	Bracket for oil container	6 1031	Fastener clip for oil container
9	1.00	Oilhose with clamps	20 0400	Oil hose, 2,5m with 3 clamps
10	1.00	Propeller RH	50 1270 RH	Thruster propeller 4bl for SP550 RH
11	1.00	Gearleg w/out propell	50 0600-U	Gearleg SH550 w/out propeller
12	1.00	Propeller LH	50 1270 LH	Thruster propeller 4bl for SP550 LH

The installer alone has responsibility for the installation of the spare parts. Side-Power only warranty the spare parts supplied only.

The information given in the document was correct at the time it was published. However, Sleipner Motor AS can not accept liability for any inaccuracies or omissions it may contain. Continuous product improvement may change the product specifications without notice. Therefore, Sleipner Motor AS can not accept liability for any possible differences between product and document.