

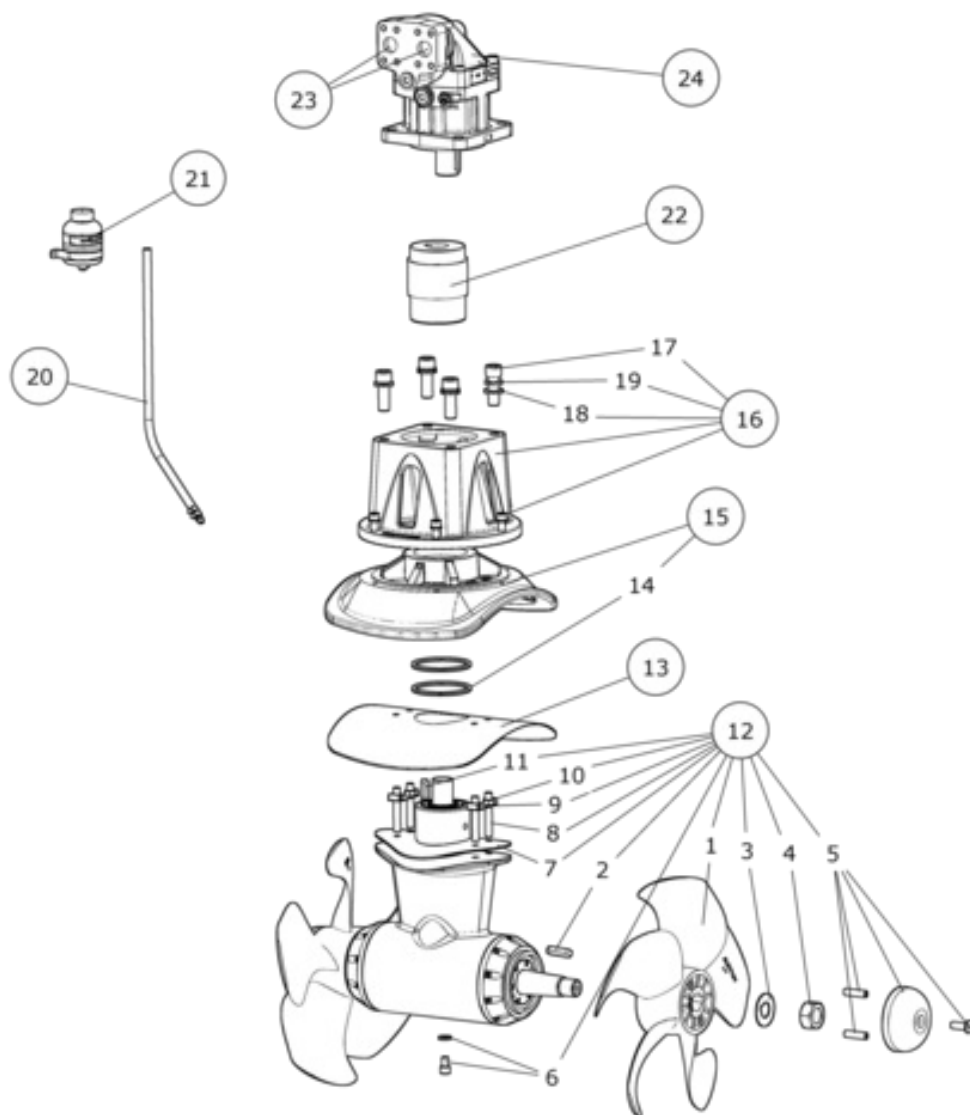
SH1000/513-



SIDE-POWER

BA110D13 - SH1000 Tunnel thruster, 110 cm³

Spare parts (valid from 2017-12-18)



| # | Description | Product |
|----------|--|---|
| 1 | Propeller | 70 1270 LH - Propeller LH SH1000 |
| 1b | Propeller | 70 1270 RH - Propeller RH SH1000 |
| 2 | Propeller key | 70 1242 - Key for propeller shaft SH1000 |
| 3 | Propeller washer | LSD-45 - Locking plate propeller nut 45mm |
| 4 | Locknut | PM 45 - Propeller nut 45mm |
| 5 | Anode Zink | 70 1180 - Anode zink SH1000/SH1400 |
| 5b | Anode Alu | 70 1180 A - Anode alu SH1000/1400 |
| 6 | Oil drain screw with gasket | 50 1220 - Oljeplugg |
| 7 | Gasket (between gearleg and tunnel) | 70 1312 - Gasket gear leg to hull SH1000 |
| 8 | Gearleg bolt | 70 1080 - Festebolt A4-80 |
| 9 | Gearleg washer plate | 70 1241 - Låseblekke |
| 10 | Nut | 21203 - Nut DIN934 M12 A2 |
| 11 | Drive shaft key | 70 1244 - Key Drive shaft SH1000 |
| 12 | Complete gearleg w/props | 70 0601 - Gearleg Assy Ø513 W/props |
| 12b | Complete gearleg without props | 70 0600 - Gearhus montert SH1000 |
| 12c | Complete gearleg remanufactured | 70 0605 - Gearhus,bytte SH1000 |
| 13 | Gasket(between tunnel and motor bracket) | 70 1313 - Rubber gasket, SH1000 motor bracket |
| 14 | O-ring seals in motor bracket | 70 1302 - O-ring |
| 15 | Lower motor bracket | 70 0502 - Motor Bracket, lower part. SH1000. |
| 16 | Upper motor bracket w/bolts | 70 0503 - Brakett øvre del Komplet |
| 17 | Motor bolt | 110009 - Skrue M20 x 60 Unbraco |
| 18 | Motor bolt washer | 50 1181 - Washer |
| 19 | Motor bolt spring washer | 115003 - Sprengskive |
| 20 | Oil hose with hose clamps | 20 0400 - Oil hose with hose clamps |
| 21 | Oil container with bracket | 20 0300 - Oil container w/holder |
| 22 | Complete flexible coupling | |
| 22a | Gear motor, G70 | 70 1462 - Flex kobl. Rotex 42.40/Ø31,75 |
| 22b | Gear motor, G75 | 70 1462 - Flex kobl. Rotex 42.40/Ø31,75 |
| 22c | Gear motor, G80 | 70 1462 - Flex kobl. Rotex 42.40/Ø31,75 |
| 22d | Bent axis piston motor, BA60 | 70 1465 - Flex kobling Rotex 42 Ø40/14T |
| 22e | Bent axis piston motor, BA75 | 70 1465 - Flex kobling Rotex 42 Ø40/14T |
| 22f | Bent axis piston motor, BA80 | 70 1466 - Flex kobling Rotex 42 Ø40/17T |
| 22g | Bent axis piston motor, BA90 | 70 1465 - Flex kobling Rotex 42 Ø40/14T |
| 22h | Bent axis piston motor, BA110 | 70 1464 - Flex kobling Rotex 42.40/13T |

| | | |
|-----|--|---|
| 22i | Bent axis piston motor, BA125 | 70 1464 - Flex kobling Rotex 42.40/13T |
| 23 | Port flange kit: (Separately from motor) | |
| 23a | Gear motor, G70 | n/a |
| 23b | Gear motor, G75 | n/a |
| 23c | Gear motor, G80 | n/a |
| 23d | Bent axis piston motor, BA60 | FL-6000-34-UNC - Flange kit SAE6000 3/4" |
| 23e | Bent axis piston motor, BA75 | FL-6000-1-UNC - Flange kit SAE6000 1" |
| 23f | Bent axis piston motor, BA80 | FL-6000-1-UNC - Flange kit SAE6000 1" |
| 23g | Bent axis piston motor, BA90 | FL-6000-1-UNC - Flange kit SAE6000 1" |
| 23h | Bent axis piston motor, BA110 | FL-6000-114-UNC - Flange kit SAE6000 1 1/4" |
| 23i | Bent axis piston motor, BA125 | FL-6000-114-UNC - Flange kit SAE6000 1 1/4" |
| 24 | Hyd. Motor assembly options: | |
| 24a | Gear motor, G70 | 72100/G-70 - Hydraulikk motor 70ccm |
| 24b | Gear motor, G75 | 72100/G-75 - Hydraulikk motor 75ccm |
| 24c | Gear motor, G80 | 72100/G-80 - Hydraulikk motor 80ccm |
| 24d | Bent axis piston motor, BA60 | 72100/BA60 - Hydraulikk motor 60cc BentAxis |
| 24e | Bent axis piston motor, BA75 | 72100/BA75 - Hyd motor 75 ccm Bent Axis |
| 24f | Bent axis piston motor, BA80 | 72100/F12-080-C4C17 - Hyd motor 80 ccm Bent Axis |
| 24g | Bent axis piston motor, BA90 | 72100/AA2FM-090-C14 - Hyd motor 90 ccm Bent Axis |
| 24h | Bent axis piston motor, BA110 | 72100/F12-110-D4D13 - Hyd motor 110ccm Bent Axis |
| 24i | Bent axis piston motor, BA125 | 72100/AA2FM-125-D13 - Hyd motor 125 ccm Bent Axis |

The installer alone has responsibility for the installation of the spare parts. Side-Power only warranty the spare parts supplied only.

The information given in the document was correct at the time it was published. However, Sleipner Motor AS can not accept liability for any inaccuracies or omissions it may contain. Continuous product improvement may change the product specifications without notice. Therefore, Sleipner Motor AS can not accept liability for any possible differences between product and document.