

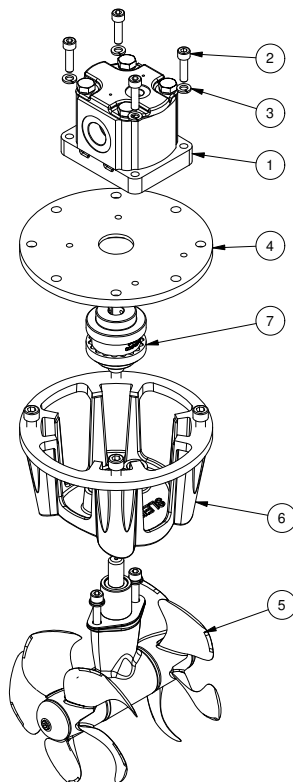
SH100/185T-U06

SH100 tunnel thruster hydraulic Ø185 U06

Spare parts (valid from 2022-08-26 to 2022-08-29)



SLEIPNER



#	Quantity	Name	Item Code	Description
1	1.00	Parker hydraulikkmotor 6-19ccm	72100/U-06	Hydraulic motor 6cm ³ gear motor
2	4.00	Bolt		DIN 912 - M8 x 30
3	4.00	Washer		DIN 127 - A 8
4	1.00	Adaptor plate	10 21301	Adapter plate SH100/240
5	1.00	Gearleg	8 0601	Gearleg SE80/100
6	1.00	Bracket	8 0501	Motor bracket SE80/100
7	1.00	Flexible coupling	7 1450	Flexible coupling SH100

The installer alone has responsibility for the installation of the spare parts. Side-Power only warranty the spare parts supplied only.

The information given in the document was correct at the time it was published. However, Sleipner Motor AS can not accept liability for any inaccuracies or omissions it may contain. Continuous product improvement may change the product specifications without notice. Therefore, Sleipner Motor AS can not accept liability for any possible differences between product and document.