

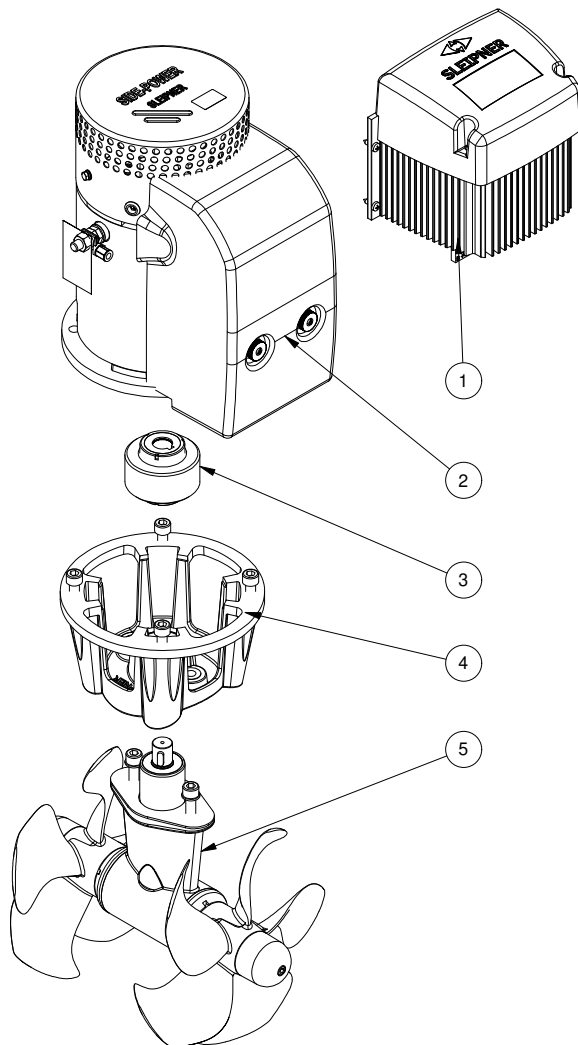
**SEP130/250T-24V**

**SEP130 PRO™ tunnel bow/stern thruster**  
**24V**

**Spare parts (valid from 2022-12-06)**



**SLEIPNER**



#	Quantity	Name	Item Code	Description
1	1.00	PPC 520	PPC520	PPC520 PRO™ power control unit
2	1.00	Electric motor	9 0104 24	Electric motor SEP/SR/SRP130 24V
3	2.00	Flexible coupling	7 1463	Flexible coupling SE120/130/150/170
4	1.00	Bracket	10 0501	Motor bracket SE130/170 + SH240
5	1.00	Gearleg	9 0601	Gearleg SE130

The installer alone has responsibility for the installation of the spare parts. Side-Power only warranty the spare parts supplied only.

The information given in the document was correct at the time it was published. However, Sleipner Motor AS can not accept liability for any inaccuracies or omissions it may contain. Continuous product improvement may change the product specifications without notice. Therefore, Sleipner Motor AS can not accept liability for any possible differences between product and document.