

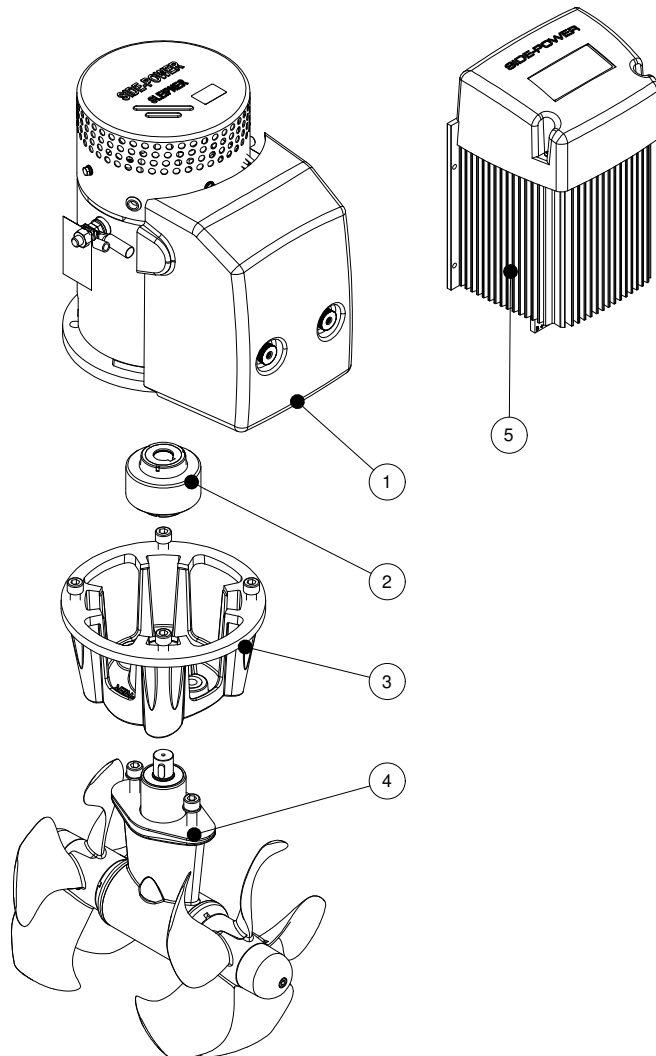
SEP130/250T-12V

**SEP130 PRO™ tunnel bow/stern thruster
12V**

Spare parts (valid from 2022-12-05)



SLEIPNER



#	Quantity	Name	Item Code	Description
1	1.00	Electric motor	9 0104 12	Electric motor SEP/SR/SRP130 12V
2	1.00	Flexible coupling	7 1463	Flexible coupling SE120/130/150/170
3	1.00	Bracket	10 0501	Motor bracket SE130/170 + SH240
4	1.00	Gearleg	9 0601	Gearleg SE130
5	1.00	PPC 820	PPC820	PPC820 PRO™ power control unit

The installer alone has responsibility for the installation of the spare parts. Side-Power only warranty the spare parts supplied only.

The information given in the document was correct at the time it was published. However, Sleipner Motor AS can not accept liability for any inaccuracies or omissions it may contain. Continuous product improvement may change the product specifications without notice. Therefore, Sleipner Motor AS can not accept liability for any possible differences between product and document.