

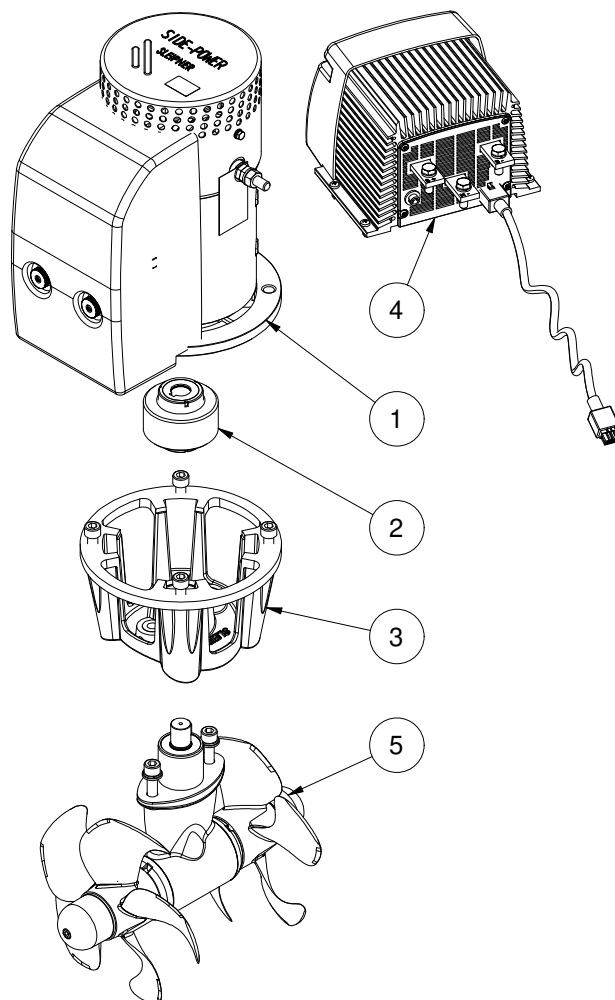
SEP120/215T-24V

**SEP120 PRO™ tunnel bow/stern thruster
24V**

Spare parts (valid from 2022-07-04)



SLEIPNER



#	Quantity	Name	Item Code	Description
1	1.00	Electric motor	8 0108 24	Electric motor SEP120 24V
2	1.00	Flexible coupling	7 1463	Flexible coupling SE120/130/150/170
3	1.00	Bracket	9 0500	Motor bracket SE120/150
4	1.00	PPC 520	PPC520	PPC520 PRO™ power control unit
5	1.00	Gearleg	10 0600	Gearleg SE120/150

The installer alone has responsibility for the installation of the spare parts. Side-Power only warranty the spare parts supplied only.

The information given in the document was correct at the time it was published. However, Sleipner Motor AS can not accept liability for any inaccuracies or omissions it may contain. Continuous product improvement may change the product specifications without notice. Therefore, Sleipner Motor AS can not accept liability for any possible differences between product and document.