

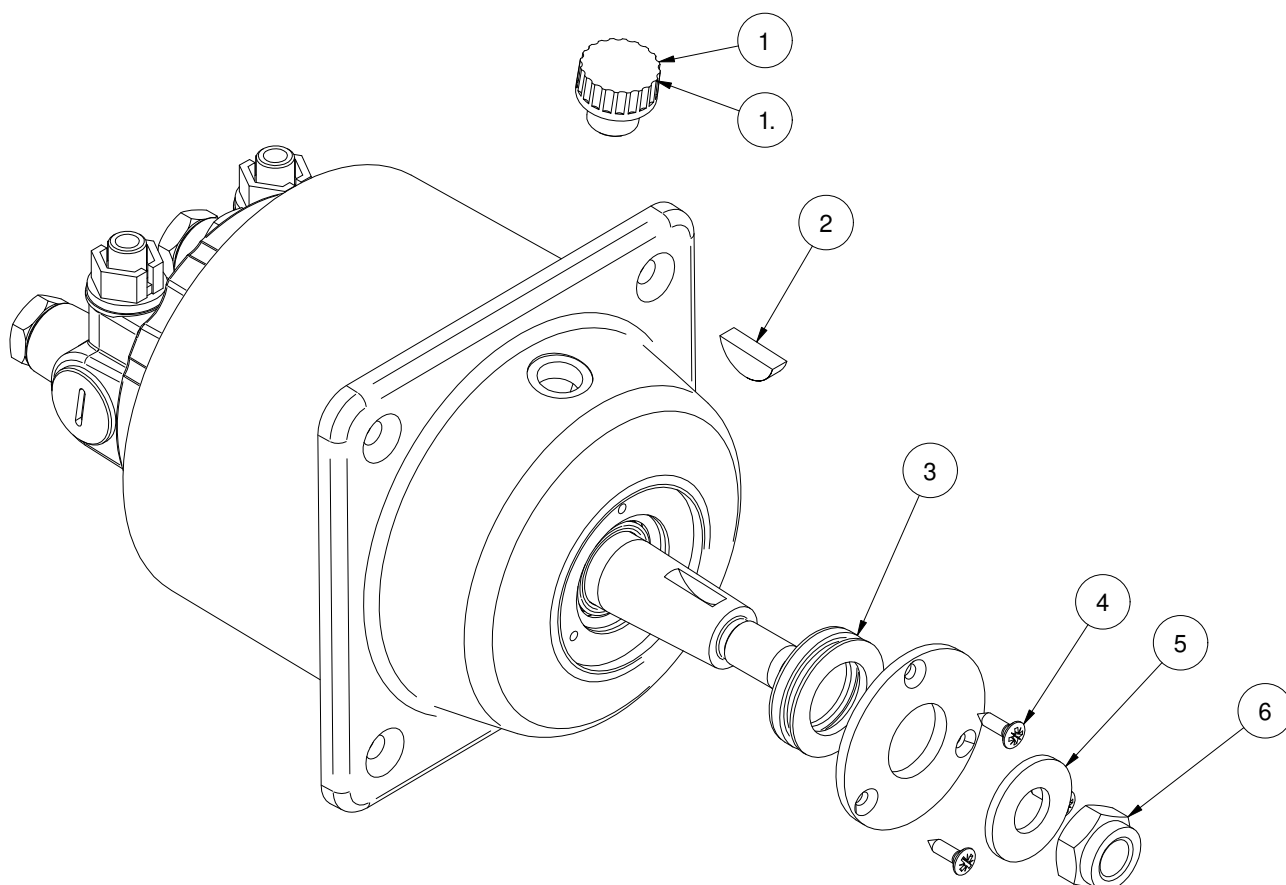
**72061**

**Helm pump, hydraulic steering 26cm<sup>3</sup>  
with flange**

**Spare parts (valid from 2023-02-17)**



**SLEIPNER**



#	Quantity	Name	Item Code	Description
1	1.00	Non-ventilated refill plug for helm pumps ( type 1)	74017T	Non-ventilated refill plug for helm pumps with 26,35/43cm <sup>3</sup> volume
1.	1.00	Ventilated refill plug for hel pumps (type 2)	74017	Ventilated refill plug for helm pumps with 26/35/43cm <sup>3</sup>
2	1.00	Key for helm pump	74252	Key for helm pump 5 x 19mm, stainless
3	1.00	Quad seal for hydro/electric	74008	O-ring + quad ring kit for helm pump shaft
4	3.00	Screw		M3,5 x 13
5	1.00	Washer		Ø28 x 12,5mm T2,5
6	1.00	Lock nut		DIN 985 - M12x1,75

The installer alone has responsibility for the installation of the spare parts. Side-Power only warranty the spare parts supplied only.

The information given in the document was correct at the time it was published. However, Sleipner Motor AS can not accept liability for any inaccuracies or omissions it may contain. Continuous product improvement may change the product specifications without notice. Therefore, Sleipner Motor AS can not accept liability for any possible differences between product and document.